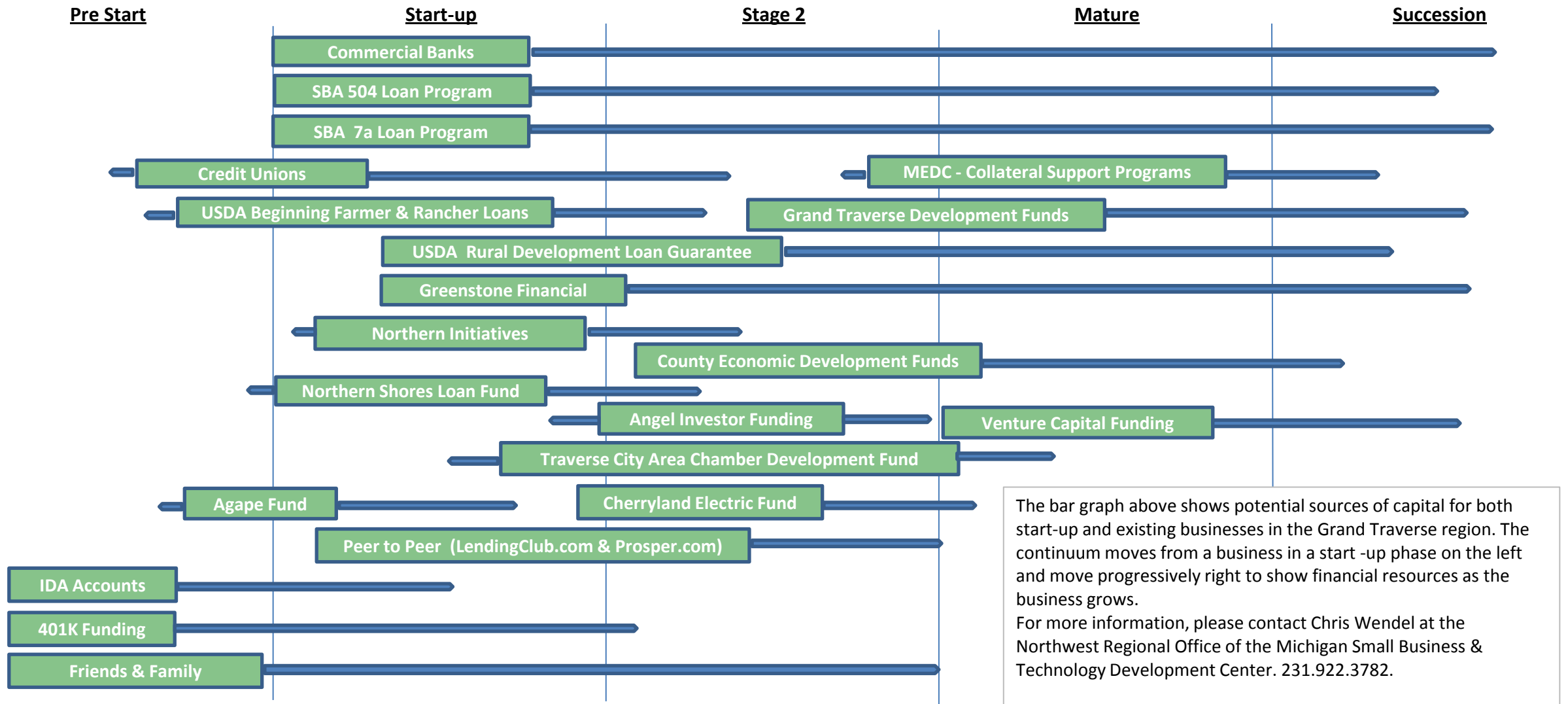


# MI-SBTDC - Northwest Region

## Small Business Lending Continuum



The bar graph above shows potential sources of capital for both start-up and existing businesses in the Grand Traverse region. The continuum moves from a business in a start-up phase on the left and move progressively right to show financial resources as the business grows.

For more information, please contact Chris Wendel at the Northwest Regional Office of the Michigan Small Business & Technology Development Center. 231.922.3782.